

SEE NOTES 7
D/C LOCATION & PART NUMBER:
YYWW & 81052XXXX

- NOTES:
- ELECTRICAL CHARACTERISTICS
 - VOLTAGE RATING: 250V
 - CONTACT RESISTANCE: 10 MILLIOHMS MAX. INITIAL.
15 MILLIOHMS MAX. AFTER TEST.
 - INSULATION RESISTANCE: 1000 MEGOHMS MIN. AT 500 VDC.
 - DIELECTRIC WITHSTAND VOLTAGE: 500 VDC RMS, MIN. AT SEA LEVEL.
 - MECHANICAL CHARACTERISTICS:
 - CONTACT INSERTION FORCE: 0.50 Kgf MAX. PER CONTACT PAIR.
(TOTAL 122.5 N MAX) USE 1.57mm THICKNESS GAUGE.
 - CONTACT WITHDRAW FORCE: 0.082 Kgf MIN. PER CONTACT PAIR.
(TOTAL 20 N MIN) USE 1.57mm THICKNESS GAUGE.
 - CONTACT RETENTION FORCE: 0.5 Kgf MIN.
 - DURABILITY: 500 CYCLES.
 - ENVIRONMENTAL CHARACTERISTICS:
 - OPERATION TEMPERATURE RANGE: -55°C TO +105°C.
 - LEAD-FREE AND ROHS COMPLIANT PRODUCT
 - UNLESS OTHERWISE SPECIFIED, ALL TOLERANCES FOLLOW DRAWING COMMON STANDARD.
 - PACKAGING: SEE PACKAGE SPECIFICATION.
 - DATE CODE LOCATION & PART NUMBER IS SHOWN ABOVE
DATE CODE FORMAT: YYWW
YY=YEAR
WW=WEEK
 - PART NO : 81052 5 0 0 X X

CONTACT GOLD PLATING: 0: NO LOGO
1: WITH MZF LOGO

2: 30u" GOLD PLATING
3: 15u" GOLD PLATING

SECTION A-A
SCALE 1:1

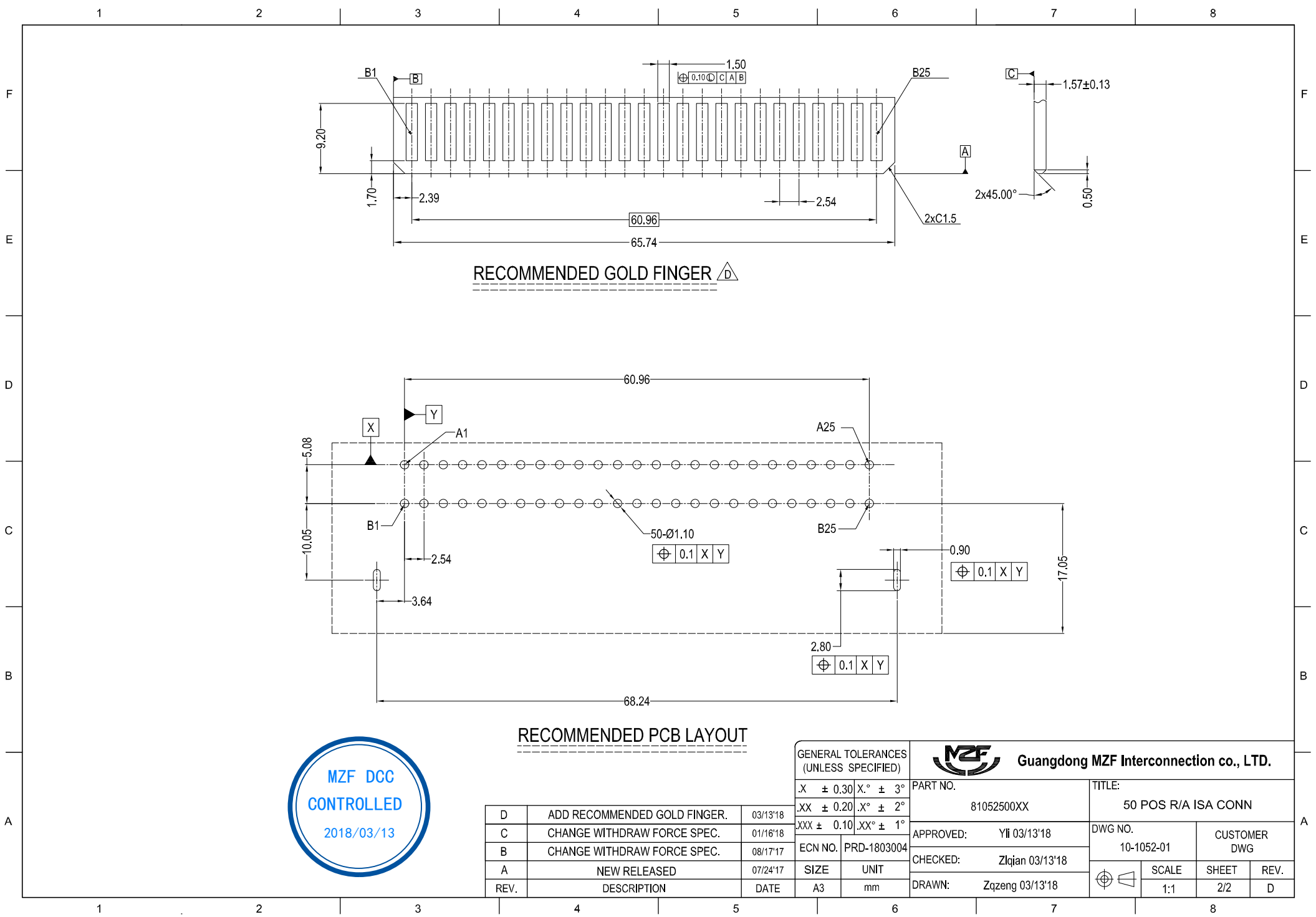


REV.	DESCRIPTION	DATE
D	ADD RECOMMENDED GOLD FINGER.	03/13'18
C	CHANGE WITHDRAW FORCE SPEC.	01/16'18
B	CHANGE WITHDRAW FORCE SPEC.	08/17'17
A	NEW RELEASED	07/24'17

ITEM	DESCRIPTION	QTY	MATERIAL	PLATING & COLOR
3	HOUSING	1	THERMOPLASTIC	BLACK
2	HOOK	2	COPPER ALLOY	PLATING TIN
1	CONTACT	50	COPPER ALLOY	SEE PART NO.

GENERAL TOLERANCES (UNLESS SPECIFIED)		PART NO. 81052500XX				TITLE: 50 POS R/A ISA CONN			
.X ± 0.30	X.° ± 3°	APPROVED: Yli 03/13'18		DWG NO. 10-1052-01		CUSTOMER DWG			
.XX ± 0.20	.X° ± 2°	CHECKED: Zlqian 03/13'18		SCALE 1:1		SHEET 1/2		REV. D	
.XXX ± 0.10	.XX° ± 1°	DRAWN: Zqzeng 03/13'18							
ECN NO. PRD-1803004	SIZE UNIT A3 mm								





RECOMMENDED GOLD FINGER

RECOMMENDED PCB LAYOUT



REV.	DESCRIPTION	DATE
D	ADD RECOMMENDED GOLD FINGER.	03/13'18
C	CHANGE WITHDRAW FORCE SPEC.	01/16'18
B	CHANGE WITHDRAW FORCE SPEC.	08/17'17
A	NEW RELEASED	07/24'17

GENERAL TOLERANCES (UNLESS SPECIFIED)		Guangdong MZF Interconnection co., LTD.			
.X ± 0.30	X.° ± 3°	PART NO.	TITLE:		
.XX ± 0.20	.X° ± 2°	81052500XX	50 POS R/A ISA CONN		
.XXX ± 0.10	.XX° ± 1°	ECN NO. PRD-1803004	APPROVED: Yli 03/13'18	DWG NO. 10-1052-01	CUSTOMER DWG
		SIZE UNIT	CHECKED: Zlqian 03/13'18	SCALE	SHEET
		A3 mm	DRAWN: Zqzeng 03/13'18	1:1	2/2
				REV.	D