

PTFIX 12X1,5 GY - Distribution block



3002758

<https://www.phoenixcontact.com/us/products/3002758>

Please be informed that the data shown in this PDF document is generated from our online catalog. Please find the complete data in the user documentation. Our general terms of use for downloads are valid.

Distribution block, Basic terminal block, nom. voltage: 450 V, nominal current: 17.5 A, number of connections: 12, connection method: Push-in connection, cross section: 0.14 mm² - 2.5 mm², mounting type: for snapping onto a DIN rail adapter, Direct mounting with flange, Free-hanging, color: gray

Your advantages

- Space-saving, thanks to the compact design
- Flexible use, thanks to direct mounting with flange covers from accessories
- Space-saving potential distribution, thanks to compact micro potential distributors
- Convenient test options, thanks to test openings at every terminal point
- Clear arrangement thanks to marking of all terminal points

Commercial data

| | |
|--------------------------------------|---------------------|
| Item number | 3002758 |
| Packing unit | 1 pc |
| Minimum order quantity | 20 pc |
| Sales key | BE09 |
| Product key | BEA114 |
| Catalog page | Page 429 (C-1-2019) |
| GTIN | 4055626432410 |
| Weight per piece (including packing) | 10.585 g |
| Weight per piece (excluding packing) | 10.505 g |
| Customs tariff number | 85369010 |
| Country of origin | PL |

PTFIX 12X1,5 GY - Distribution block



3002758

<https://www.phoenixcontact.com/us/products/3002758>

Technical data

Notes

| | |
|---------|--|
| General | the blocks can be bridged with one another via the conductor shaft, for corresponding plug-in bridges, see accessories |
|---------|--|

Product properties

| | |
|-----------------------|----------------------------|
| Product type | Distributor terminal block |
| Number of connections | 12 |
| Number of rows | 1 |
| Potentials | 1 |

Insulation characteristics

| | |
|----------------------|-----|
| Overvoltage category | III |
| Degree of pollution | 3 |

Electrical properties

| | |
|---|--------|
| Rated surge voltage | 6 kV |
| Maximum power dissipation for nominal condition | 0.56 W |

Connection data

| | |
|---|--|
| Number of connections per level | 12 |
| Nominal cross section | 1.5 mm ² |
| Rated cross section AWG | 14 |
| Stripping length | 8 mm ... 10 mm |
| Internal cylindrical gage | A1 / B1 |
| Connection in acc. with standard | IEC 60998-2-2 |
| Conductor cross section rigid | 0.14 mm ² ... 2.5 mm ² |
| Cross section AWG | 26 ... 14 (converted acc. to IEC) |
| Conductor cross section flexible | 0.14 mm ² ... 1.5 mm ² |
| Conductor cross section, flexible [AWG] | 26 ... 16 (converted acc. to IEC) |
| Conductor cross-section flexible (ferrule without plastic sleeve) | 0.14 mm ² ... 1.5 mm ² |
| Flexible conductor cross section (ferrule with plastic sleeve) | 0.14 mm ² ... 1.5 mm ² |
| Nominal current | 17.5 A |
| Maximum load current | 22 A |
| Maximum total current | 26 A |
| Nominal voltage | 450 V |

Connection cross sections directly pluggable

| | |
|---|--|
| Conductor cross section rigid | 0.34 mm ² ... 2.5 mm ² |
| Conductor cross section, rigid [AWG] | 26 ... 14 (converted acc. to IEC) |
| Conductor cross-section flexible (ferrule without plastic sleeve) | 0.34 mm ² ... 1.5 mm ² |
| Flexible conductor cross section (ferrule with plastic sleeve) | 0.34 mm ² ... 1.5 mm ² |

Dimensions

PTFIX 12X1,5 GY - Distribution block



3002758

<https://www.phoenixcontact.com/us/products/3002758>

| | |
|--------|---------|
| Width | 24.9 mm |
| Height | 21.6 mm |
| Depth | 17.7 mm |

Material specifications

| | |
|---|-------------|
| Color | gray |
| Flammability rating according to UL 94 | V0 |
| Insulating material group | I |
| Insulating material | PA |
| Static insulating material application in cold | -60 °C |
| Temperature index of insulation material (DIN EN 60216-1 (VDE 0304-21)) | 130 °C |
| Relative insulation material temperature index (Elec., UL 746 B) | 130 °C |
| Fire protection for rail vehicles (DIN EN 45545-2) R22 | HL 1 - HL 3 |
| Fire protection for rail vehicles (DIN EN 45545-2) R23 | HL 1 - HL 3 |
| Fire protection for rail vehicles (DIN EN 45545-2) R24 | HL 1 - HL 3 |
| Fire protection for rail vehicles (DIN EN 45545-2) R26 | HL 1 - HL 3 |
| Calorimetric heat release NFPA 130 (ASTM E 1354) | 28 MJ/kg |
| Surface flammability NFPA 130 (ASTM E 162) | passed |
| Specific optical density of smoke NFPA 130 (ASTM E 662) | passed |
| Smoke gas toxicity NFPA 130 (SMP 800C) | passed |

Mechanical properties

Mechanical data

| | |
|-----------------|----|
| Open side panel | No |
|-----------------|----|

Mechanical tests

Attachment on the carrier

| | |
|-------------------------|---|
| DIN rail/fixing support | NS 35/NS 15 |
| Result | Test passed |
| Note | <p>When aligning several blocks, it is recommended to either place a DIN rail adapter underneath the connection point or a flange element between the blocks.</p> <p>For versions with 6 or 7 connections, it is enough to place one DIN rail adapter centrally per block and place flange elements after every other block.</p> <p>When using the DIN rail adapter PTFIX-NS35, an aligned block must not protrude by more than a half.</p> |

Environmental and real-life conditions

Needle-flame test

| | |
|------------------|-------------|
| Time of exposure | 30 s |
| Result | Test passed |

Ambient conditions

PTFIX 12X1,5 GY - Distribution block



3002758

<https://www.phoenixcontact.com/us/products/3002758>

| | |
|--|---|
| Ambient temperature (storage/transport) | -25 °C ... 60 °C (for a short time, not exceeding 24 h, -60 °C to +70 °C) |
| Ambient temperature (assembly) | -5 °C ... 70 °C |
| Ambient temperature (actuation) | -5 °C ... 70 °C |
| Permissible humidity (storage/transport) | 30 % ... 70 % |

Standards and regulations

| | |
|----------------------------------|---------------|
| Connection in acc. with standard | IEC 60998-2-2 |
|----------------------------------|---------------|

Mounting

| | |
|---------------|--------------------------------------|
| Mounting type | for snapping onto a DIN rail adapter |
| | Direct mounting with flange |
| | Free-hanging |

PTFIX 12X1,5 GY - Distribution block

3002758

<https://www.phoenixcontact.com/us/products/3002758>



Drawings

Circuit diagram



PTFIX 12X1,5 GY - Distribution block



3002758

<https://www.phoenixcontact.com/us/products/3002758>

Approvals

To download certificates, visit the product detail page: <https://www.phoenixcontact.com/us/products/3002758>

| DNV Approval ID: TAE00002TT-04 | | | | |
|--|-----------------------|-----------------------|-------------------|-----------------------------|
| | Nominal voltage U_N | Nominal current I_N | Cross section AWG | Cross section mm^2 |
| | 500 V | 24 A | - | - |

| CSA Approval ID: 13631 | | | | |
|----------------------------------|-----------------------|-----------------------|-------------------|-----------------------------|
| | Nominal voltage U_N | Nominal current I_N | Cross section AWG | Cross section mm^2 |
| Use group B | 300 V | 20 A | 26 - 12 | - |
| Use group C | 150 V | 20 A | 26 - 12 | - |
| Use group D | 300 V | 10 A | 26 - 12 | - |

| CB Scheme IECEE CB Scheme Approval ID: DE1-63083 | | | | |
|---|-----------------------|-----------------------|-------------------|-----------------------------|
| | Nominal voltage U_N | Nominal current I_N | Cross section AWG | Cross section mm^2 |
| | 450 V | 17.5 A | - | - 1.5 |

| ERC EAC Approval ID: RU C-DE.BL08.B.00644 | | | | |
|--|--|--|--|--|
|--|--|--|--|--|

| UL LR Approval ID: LR2002627TA | | | | |
|---|--|--|--|--|
|---|--|--|--|--|

| BV Approval ID: 59146/A0 BV | | | | |
|---------------------------------------|--|--|--|--|
|---------------------------------------|--|--|--|--|

| VDE Zeichengenehmigung Approval ID: 40047798 | | | | |
|--|--|--|--|--|
|--|--|--|--|--|

| cULus Recognized Approval ID: E60425 | | | | |
|--|-----------------------|-----------------------|-------------------|-----------------------------|
| | Nominal voltage U_N | Nominal current I_N | Cross section AWG | Cross section mm^2 |
| Use group B | | | | |

PTFIX 12X1,5 GY - Distribution block



3002758

<https://www.phoenixcontact.com/us/products/3002758>

| | | | | |
|-------------|-------|------|---------|---|
| | 300 V | 20 A | 26 - 12 | - |
| Use group C | | | | |
| | 150 V | 20 A | 26 - 12 | - |
| Use group F | | | | |
| | 500 V | 20 A | 26 - 12 | - |
| Use group D | | | | |
| | 300 V | 10 A | 26 - 12 | - |

PTFIX 12X1,5 GY - Distribution block



3002758

<https://www.phoenixcontact.com/us/products/3002758>

Classifications

ECLASS

| | |
|-------------|----------|
| ECLASS-11.0 | 27141120 |
| ECLASS-13.0 | 27250118 |

ETIM

| | |
|----------|----------|
| ETIM 9.0 | EC000897 |
|----------|----------|

UNSPSC

| | |
|-------------|----------|
| UNSPSC 21.0 | 39121400 |
|-------------|----------|

PTFIX 12X1,5 GY - Distribution block



3002758

<https://www.phoenixcontact.com/us/products/3002758>

Environmental product compliance


| | |
|------------|---|
| China RoHS | Environmentally friendly use period: unlimited = EFUP-e |
| | No hazardous substances above threshold values |

PTFIX 12X1,5 GY - Distribution block

3002758

<https://www.phoenixcontact.com/us/products/3002758>

Accessories

 Note: Applying some accessories below might limit this product.

FBS 2-4 - Plug-in bridge

3030116

<https://www.phoenixcontact.com/us/products/3030116>



Plug-in bridge, pitch: 4.2 mm, number of positions: 2, color: red

 Max. current carrying capacity: 17.5 A

FBS 2-4 GY - Plug-in bridge

3030118

<https://www.phoenixcontact.com/us/products/3030118>



Plug-in bridge, pitch: 4.2 mm, number of positions: 2, color: gray

 Max. current carrying capacity: 17.5 A

PTFIX 12X1,5 GY - Distribution block

3002758

<https://www.phoenixcontact.com/us/products/3002758>




FBS 2-4 BU - Plug-in bridge

3030117

<https://www.phoenixcontact.com/us/products/3030117>



Plug-in bridge, pitch: 4.2 mm, number of positions: 2, color: blue

 Max. current carrying capacity: 17.5 A

PTFIX 1,5-F - Flange

1049503

<https://www.phoenixcontact.com/us/products/1049503>



Flange, with screw-on fixing, mounting type: Screw mounting, color: gray

PTFIX 12X1,5 GY - Distribution block

3002758

<https://www.phoenixcontact.com/us/products/3002758>

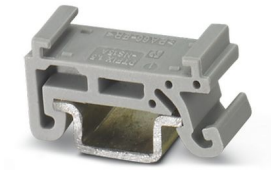


PTFIX 1,5-NS15A - DIN rail adapter

1049500

<https://www.phoenixcontact.com/us/products/1049500>

DIN rail adapter, depth: 10.85 mm, width: 8 mm, height: 21.6 mm



PTFIX 1,5-NS35 - DIN rail adapter

1049497

<https://www.phoenixcontact.com/us/products/1049497>

DIN rail adapter, depth: 11 mm, width: 21.6 mm, height: 58.1 mm



PTFIX 12X1,5 GY - Distribution block

3002758

<https://www.phoenixcontact.com/us/products/3002758>



PTFIX 1,5-NS35AD - DIN rail adapter

1049498

<https://www.phoenixcontact.com/us/products/1049498>

DIN rail adapter, for NS 35 for accommodating two rows of PTFIX 1,5 distribution blocks, depth: 10.9 mm, width: 8 mm, height: 44.4 mm



PTFIX 1,5-RZF - Mounting adapter

1050613

<https://www.phoenixcontact.com/us/products/1050613>

Adapter for direct mounting



PTFIX 12X1,5 GY - Distribution block

3002758

<https://www.phoenixcontact.com/us/products/3002758>



ISH 1,5/0,2 - Insulating sleeve

3206131

<https://www.phoenixcontact.com/us/products/3206131>



Insulating sleeve, color: white

ISH 1,5/0,5 - Insulating sleeve

3031034

<https://www.phoenixcontact.com/us/products/3031034>



Insulating sleeve, color: gray

PTFIX 12X1,5 GY - Distribution block

3002758

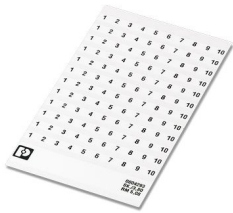
<https://www.phoenixcontact.com/us/products/3002758>



SK 3,8 REEL P4,15 WH CUS - Marker card

0825990

<https://www.phoenixcontact.com/us/products/0825990>



Marker card, can be ordered: by card, white, labeled according to customer specifications, mounting type: adhesive, for terminal block width: 4.15 mm, lettering field size: continuous x 3.8 mm

TML (EX3,8)R - Marker strip

0801837

<https://www.phoenixcontact.com/us/products/0801837>



Marker strip, Roll, white, unlabeled, can be labeled with: THERMOMARK E.300 (D)/600 (D), THERMOMARK ROLL 2.0, THERMOMARK ROLL, THERMOMARK ROLL X1, THERMOMARK ROLLMASTER 300/600, THERMOMARK X1.2, mounting type: adhesive, lettering field size: continuous x 3.8 mm, Number of individual labels: 12

PTFIX 12X1,5 GY - Distribution block



3002758

<https://www.phoenixcontact.com/us/products/3002758>

TML (104X3,8)R - Marker strip

0801833

<https://www.phoenixcontact.com/us/products/0801833>



Marker strip, Roll, white, unlabeled, can be labeled with: THERMOMARK E.300 (D)/600 (D), THERMOMARK ROLL 2.0, THERMOMARK ROLL, THERMOMARK ROLL X1, THERMOMARK ROLLMASTER 300/600, THERMOMARK X1.2, mounting type: adhesive, for terminal block width: 104 mm, lettering field size: 104 x 3.8 mm, Number of individual labels: 2500

TML (104X2,8)R - Marker strip

0801832

<https://www.phoenixcontact.com/us/products/0801832>



Marker strip, Roll, white, unlabeled, can be labeled with: THERMOMARK E.300 (D)/600 (D), THERMOMARK ROLL 2.0, THERMOMARK ROLL, THERMOMARK ROLL X1, THERMOMARK ROLLMASTER 300/600, THERMOMARK X1.2, mounting type: adhesive, for terminal block width: 104 mm, lettering field size: 104 x 2.8 mm, Number of individual labels: 2500

PTFIX 12X1,5 GY - Distribution block

3002758

<https://www.phoenixcontact.com/us/products/3002758>

TML (EX2,8)R - Marker strip

0801836

<https://www.phoenixcontact.com/us/products/0801836>

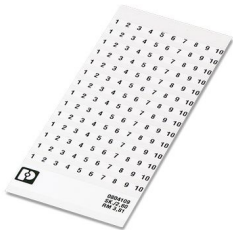


Marker strip, Roll, white, unlabeled, can be labeled with: THERMOMARK E.300 (D)/600 (D), THERMOMARK ROLL 2.0, THERMOMARK ROLL, THERMOMARK ROLL X1, THERMOMARK ROLLMASTER 300/600, THERMOMARK X1.2, mounting type: adhesive, for terminal block width: 30000 mm, lettering field size: continuous x 2.8 mm, Number of individual labels: 14

SK 2,8 REEL P4,15 WH CUS - Marker card

8199987

<https://www.phoenixcontact.com/us/products/8199987>



Marker card, can be ordered: by card, white, labeled according to customer specifications, mounting type: adhesive, for terminal block width: 4.15 mm, lettering field size: continuous x 2.8 mm

PTFIX 12X1,5 GY - Distribution block



3002758

<https://www.phoenixcontact.com/us/products/3002758>

US-TML (104X3,8) - Marker for terminal blocks

0830768

<https://www.phoenixcontact.com/us/products/0830768>



Marker for terminal blocks, Card, white, unlabeled, can be labeled with: BLUEMARK ID COLOR, BLUEMARK ID, THERMOMARK PRIME, THERMOMARK CARD 2.0, THERMOMARK CARD, mounting type: adhesive, lettering field size: 104 x 3.8 mm, Number of individual labels: 22

US-TML (104X2,8) - Marker for terminal blocks

0830767

<https://www.phoenixcontact.com/us/products/0830767>



Marker for terminal blocks, Card, white, unlabeled, can be labeled with: BLUEMARK ID COLOR, BLUEMARK ID, THERMOMARK PRIME, THERMOMARK CARD 2.0, THERMOMARK CARD, mounting type: adhesive, lettering field size: 104 x 2.8 mm, Number of individual labels: 26

PTFIX 12X1,5 GY - Distribution block



3002758

<https://www.phoenixcontact.com/us/products/3002758>

SK U/3,8 WH:UNBEDRUCKT - Marker card

0803906

<https://www.phoenixcontact.com/us/products/0803906>



Marker card, Din A4, white, unlabeled, can be labeled with: PLOTMARK, CMS-P1-PLOTTER, Office printing systems, mounting type: adhesive, for terminal block width: 210 mm, lettering field size: 186 x 3.8 mm, Number of individual labels: 1440

SK U/2,8 WH:UNBEDRUCKT - Marker card

0803883

<https://www.phoenixcontact.com/us/products/0803883>



Marker card, Din A4, white, unlabeled, can be labeled with: PLOTMARK, CMS-P1-PLOTTER, Office printing systems, mounting type: adhesive, for terminal block width: 210 mm, lettering field size: 186 x 2.8 mm, Number of individual labels: 3600

PTFIX 12X1,5 GY - Distribution block

3002758

<https://www.phoenixcontact.com/us/products/3002758>



MM-TML (EX3,8)R C1 WH/BK - Label

1092026

<https://www.phoenixcontact.com/us/products/1092026>



Label, Roll, white/black, unlabeled, can be labeled with: THERMOFOX, THERMOMARK GO, THERMOMARK GO.K, mounting type: adhesive, lettering field size: continuous x 2.8 mm, Number of individual labels: 1

MPS-MT 1-S4-B RD - Accessories

1982800

<https://www.phoenixcontact.com/us/products/1982800>

Test plug terminal block, Accessories



Phoenix Contact 2024 © - all rights reserved
<https://www.phoenixcontact.com>

Phoenix Contact USA
586 Fulling Mill Road
Middletown, PA 17057, United States
(+717) 944-1300
info@phoenixcon.com