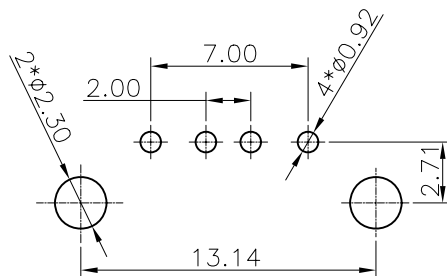


外壳后盖内扣卡点



PCB.LAYOUT

TOL: ± 0.05

NOTES:

- 1.MATERIAL:
  - 1.1 Housing:thermoplastic plastics
  - 1.2 terminals:Copper Alloy  
Gold plated in contact area:  
Tin plated in termination  
Nickel Plated overall
  - 1.3 Shell:Steel&Copper Alloy  
Nickel Plated overall
- 2.ELECTRICAL CHARACTERISTICS:
  - 2.1 Rating Current :1.5 Ampere
  - 2.2 Rating Voltage :30 V Max
  - 2.3 Contact Resistance:30 Milli ohms
  - 2.4 Insulation Resistance:1000 Mega ohms Min.
- 3.MECHANICAL CHARACTERISTICS:
  - 3.1 Connector Mating force: 35N MAX(3.57Kgf)
  - 3.2 Connector Unmating force:10N min(1.02Kgf)
  - 3.3 Durability:1500Cycles.
- 4.ENVIRONMENT CHARACTERISTICS:
  - 4.1 Operating temperature:-0°C to +50°C
  - 4.2 Storage temperature:-20°C to +60°C

COMPONENT NO:	瀚诚兴科技有限公司 SMARTCONN INT'L H.K CO.,LIMITED HTTP://WWW.SMARTCONN.COM.CN E-mail:saeles@smartconn.com.cn	
PART NO: SUB-04AF211	TITLE: USB 4PIN DIP 90度 卷边 REQUIRED DOCUMENTS: USB 4PIN DIP 90度 卷边	
CHECKED:	SCALE: 1:1	SHELLT: 1/1
DRAWN: Engle	DRAWING:	
DATE: 2020-07-24	备注:	THIRD ANGLE PROJECTION